

Appendix G

Biological Resources Figures

This appendix includes figures referenced in Chapter 3, Section 3.4, *Biological Resources*, of the [Draft EIS](#). These figures are:

- Figure G-1. Wildfire Hazard Potential
- [Figure G-2a. Sensitive Plant Species – Barneby Ridge-Cress Suitable Habitat](#)
- [Figure G-2b. Sensitive Plant Species – Pariette Cactus and Uinta Basin Hookless Cactus Suitable Habitat](#)
- Figure G-3. Mexican Spotted Owl [Moderate Quality](#) Habitat
- Figure G-4. Snowshoe Hare Seasonal Range
- Figure G-5. Bighorn Sheep Seasonal Range [and Movement Corridors](#)
- Figure G-6. Elk Seasonal Range [and Movement Corridors](#)
- Figure G-7. Moose Seasonal Range
- Figure G-8. Mule Deer Seasonal Range [and Movement Corridors](#)
- Figure G-9. Pronghorn Seasonal Range [and Movement Corridors](#)
- Figure G-10. Vegetation Communities

Figure G-1 through Figure G-9 consist of individual maps. [OEA has revised Figures G-1 to G-6, G-8, and G-9 in response to comments received on the Draft EIS and to incorporate updated data.](#)

Figure G-10 is a mapbook consisting of one index map and nine detailed map sheets. Figure G-10 depicts the biological resources field survey study area and vegetation communities in and around the study area. This figure reproduces at a smaller scale the vegetation community maps included in the *Biological Resources Baseline Environment Technical Memorandum: Uinta Basin Railway* (Technical Memorandum) (Coalition 2020a).

Table G-1 provides a crosswalk between the nine sheets in Figure G-10 and the corresponding maps included in the Technical Memorandum Appendix B, Appendix C, and Appendix D.

Table G-1. Crosswalk between Maps in Figure G-10 and Technical Memorandum

Figure G-10 Sheets	Biological Resources Baseline Environmental Technical Memorandum		
	Indian Canyon Alternative (Appendix B)	Wells Draw Alternative (Appendix C)	Whitmore Park Alternative (Appendix D)
Sheet 1	1–35	1–36	1–45
Sheet 2	34–55	34–64	44–65
Sheet 3	51–71	--	61–81
Sheet 4	68–92	--	78–106
Sheet 5	86–116	179–182	96–130
Sheet 6	115–145	140–184	129–159
Sheet 7	--	63–112	--
Sheet 8	--	109–127	--
Sheet 9	--	126–142	--

Figure G-1. Wildfire Hazard Potential

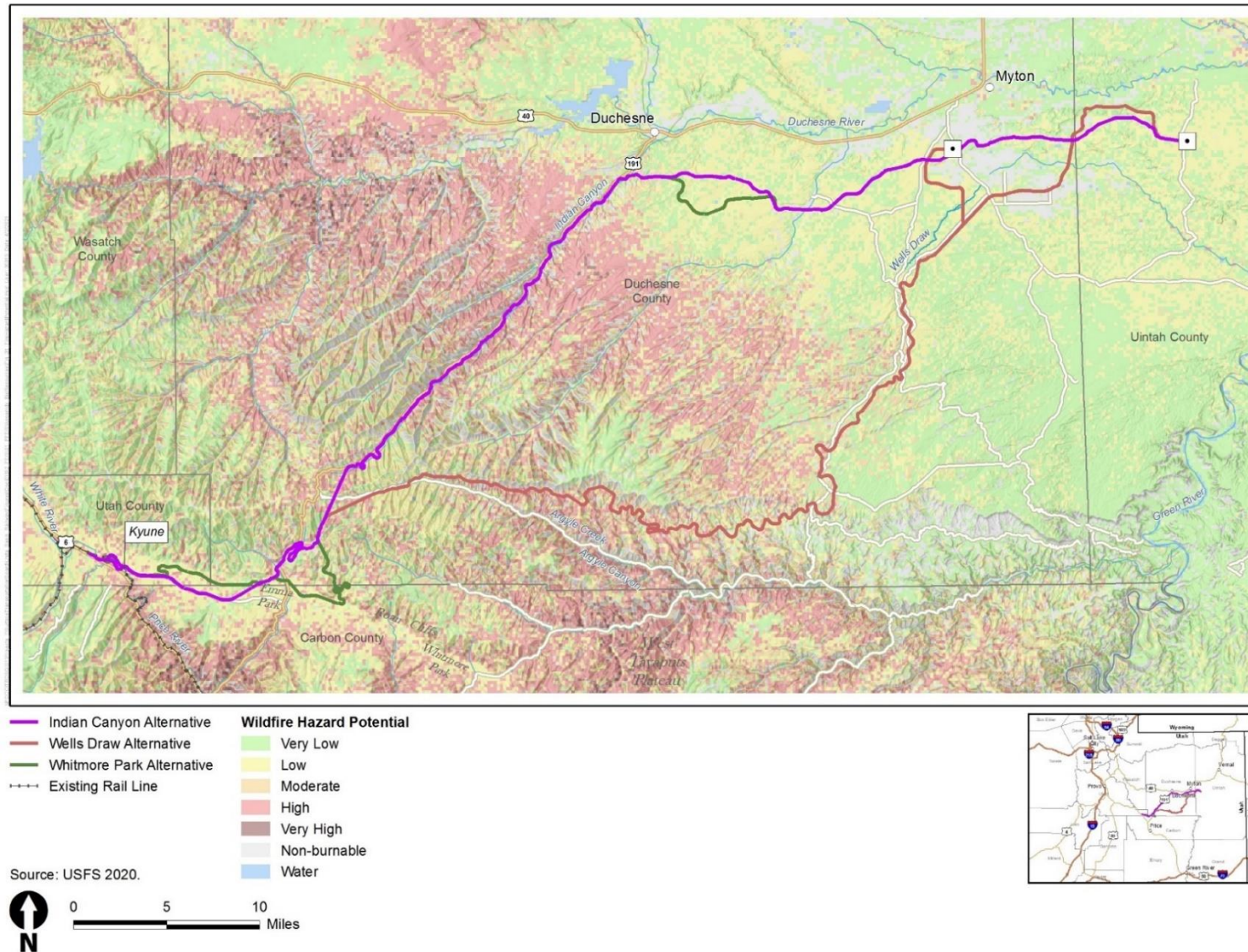


Figure G-2a. Sensitive Plant Species—Barneby Ridge-Cress Suitable Habitat

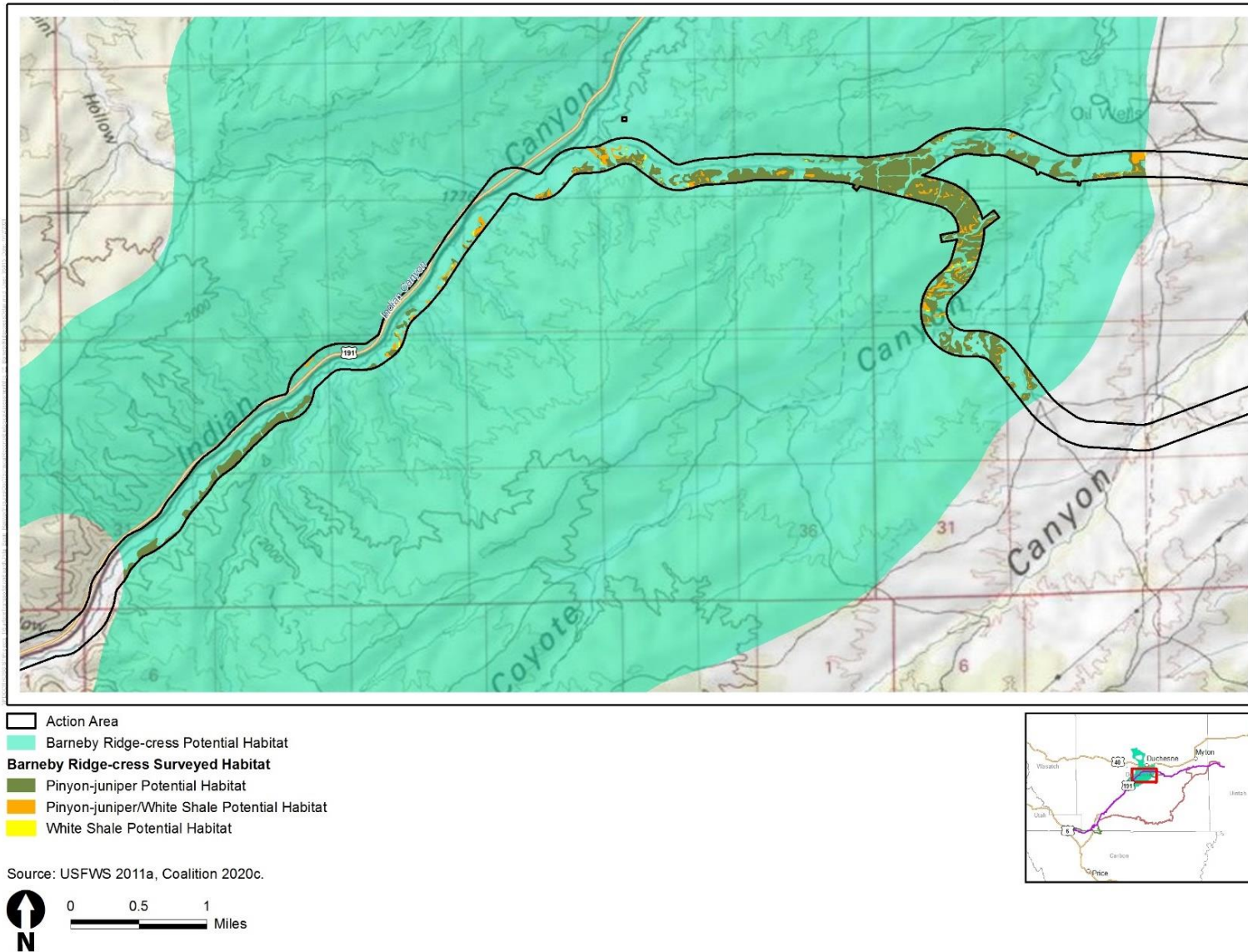


Figure G-2b. Sensitive Plant Species—Pariette Cactus and Uinta Basin Hookless Cactus Habitat

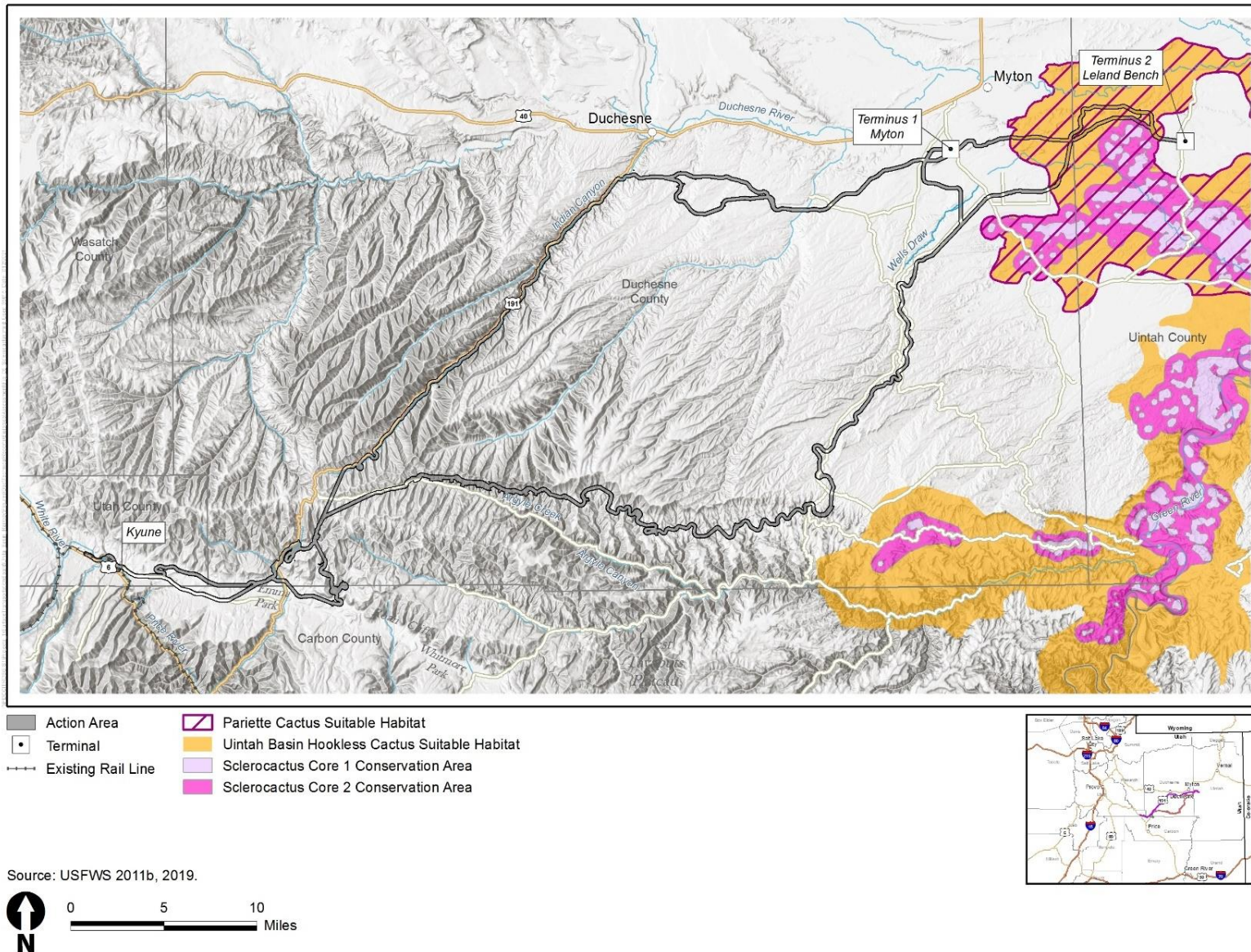


Figure G-3. Mexican Spotted Owl Moderate Quality Habitat

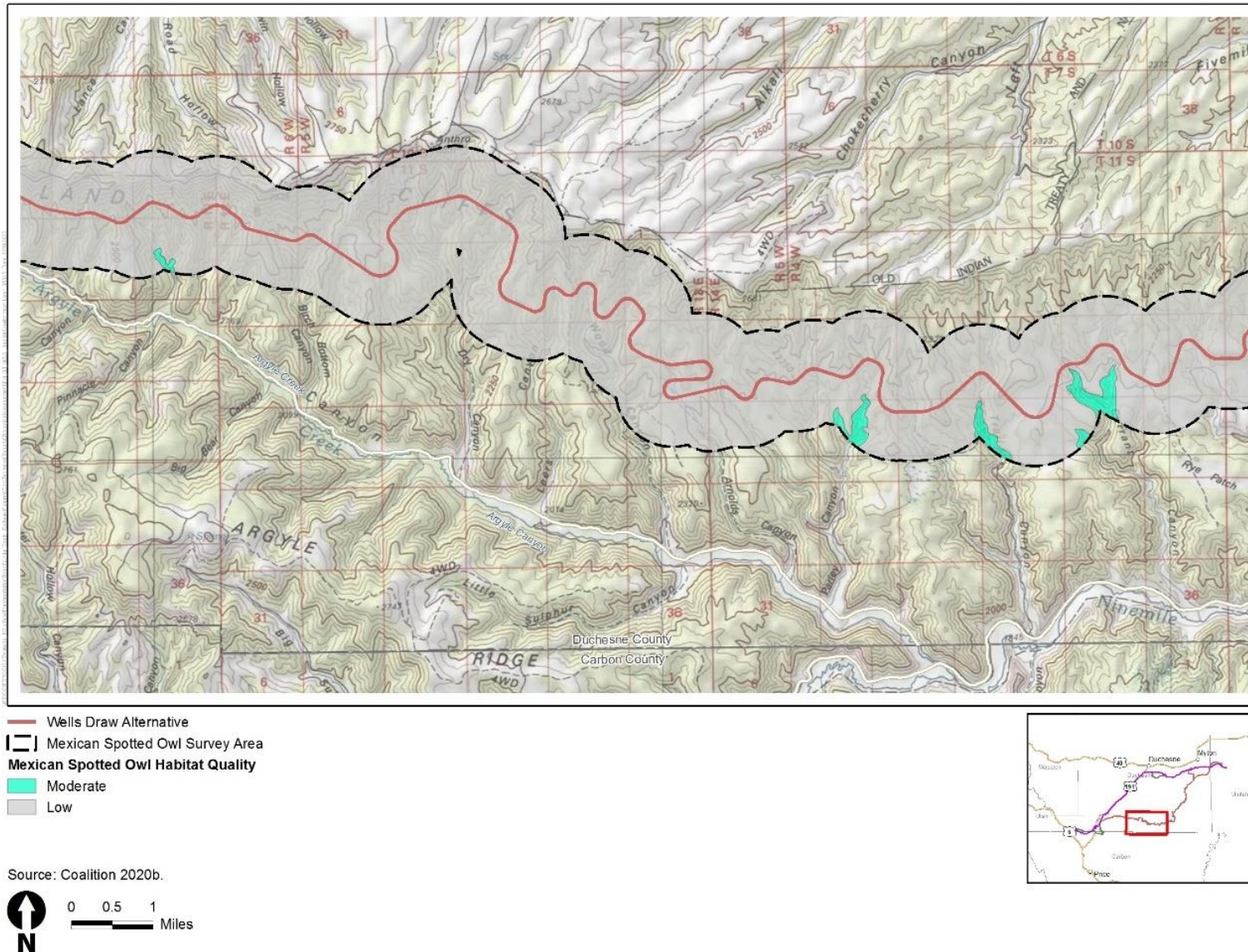


Figure G-4. Snowshoe Hare Seasonal Range

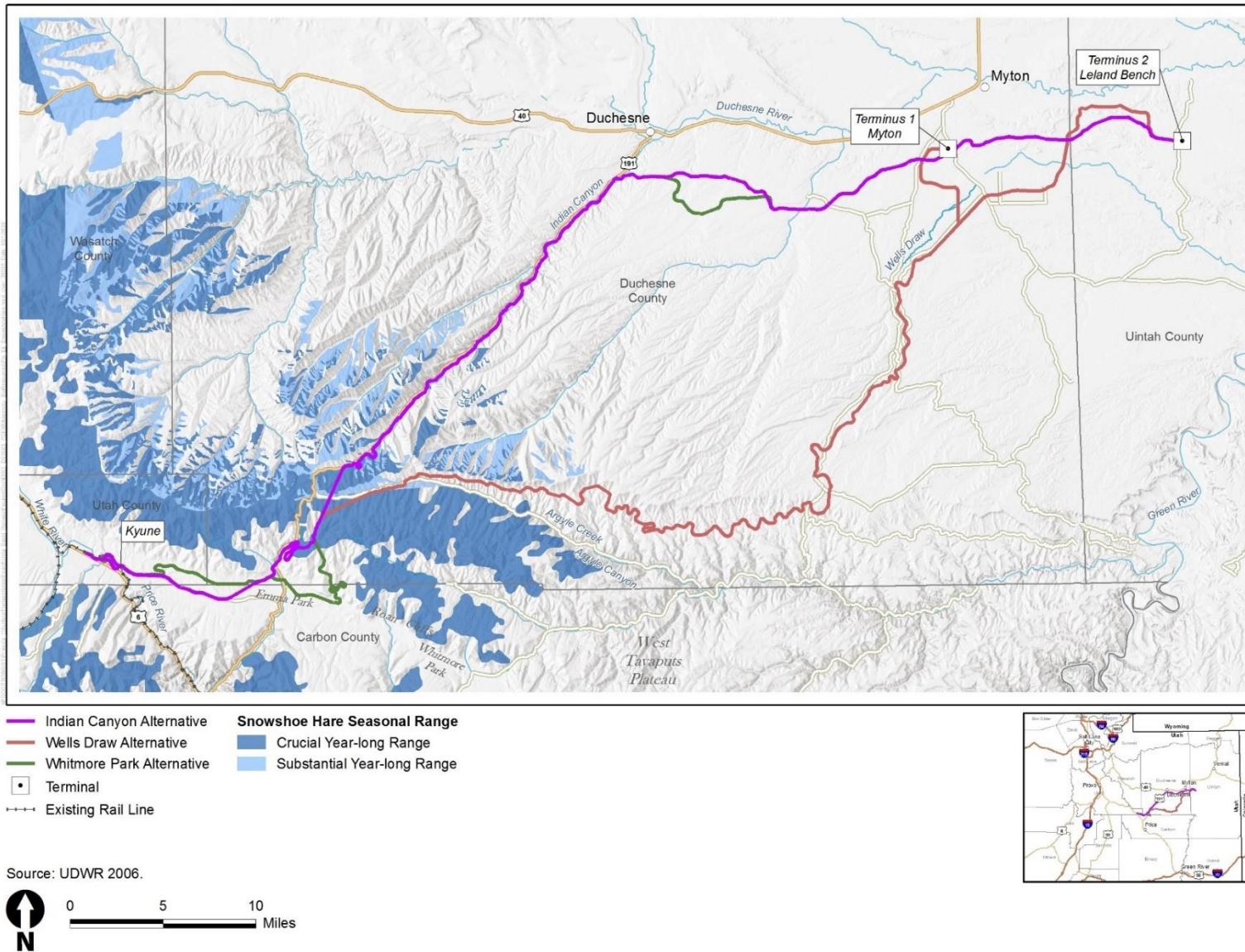


Figure G-5. Bighorn Sheep Seasonal Range and Movement Corridors

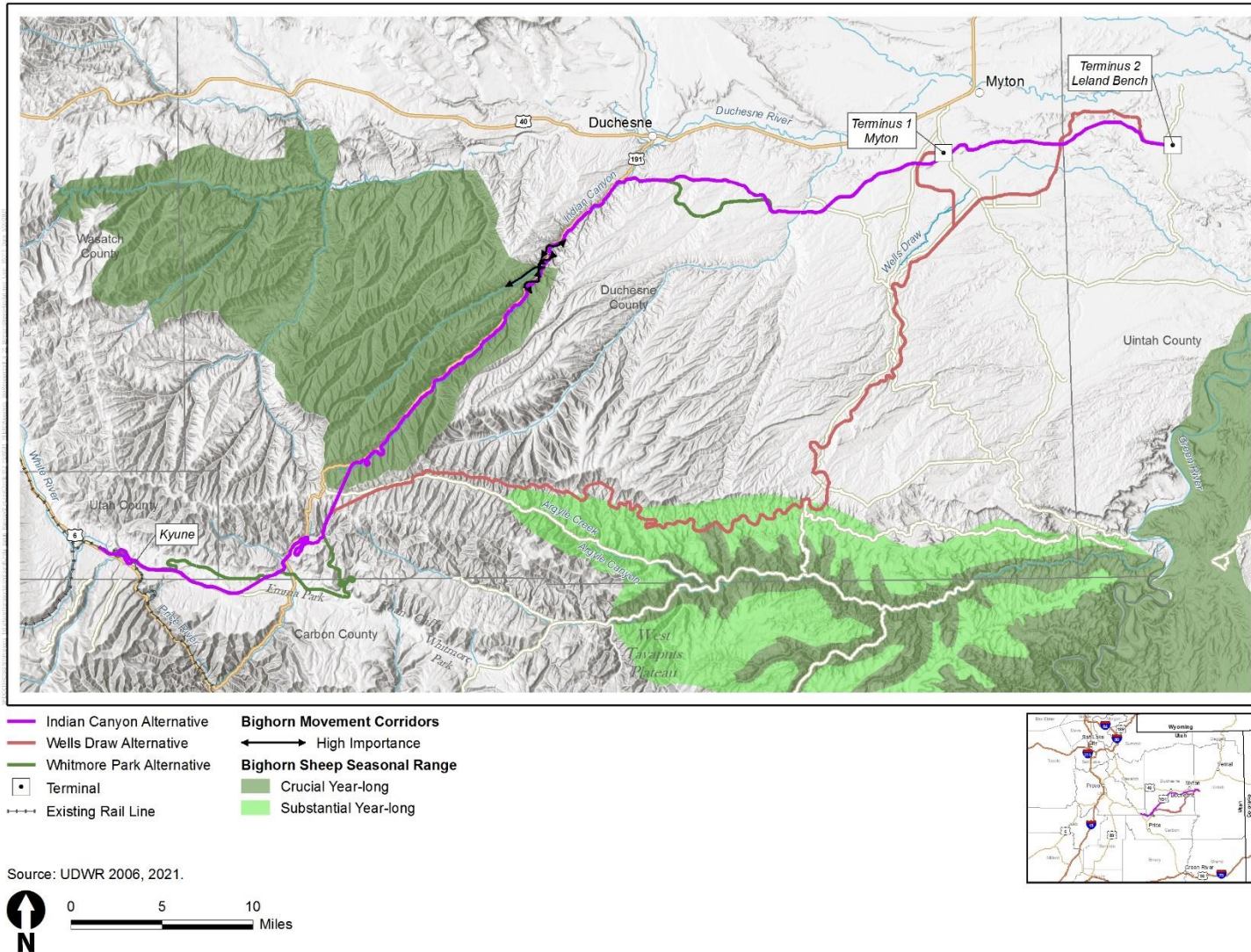


Figure G-6. Elk Seasonal Range and Movement Corridors

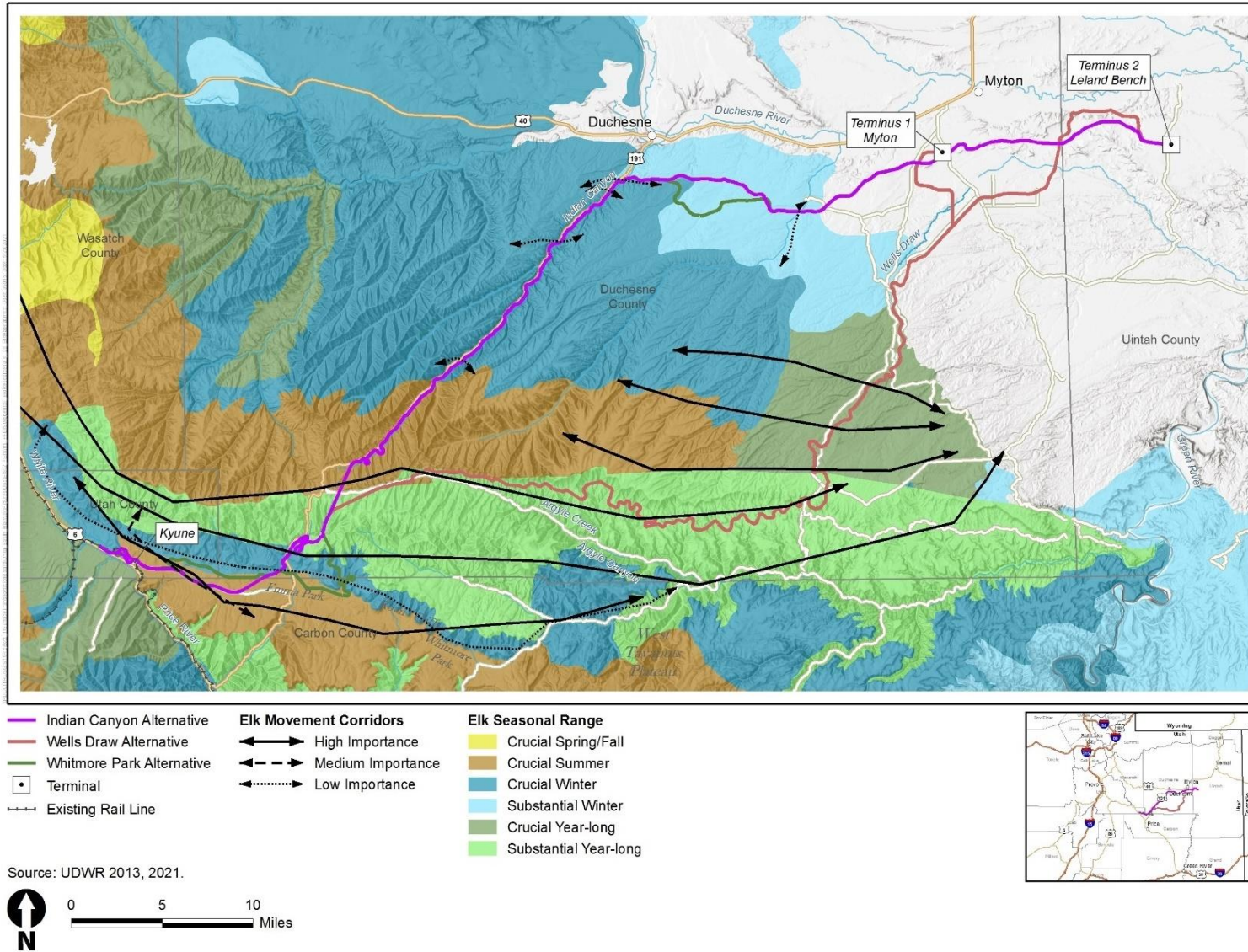


Figure G-7. Moose Seasonal Range

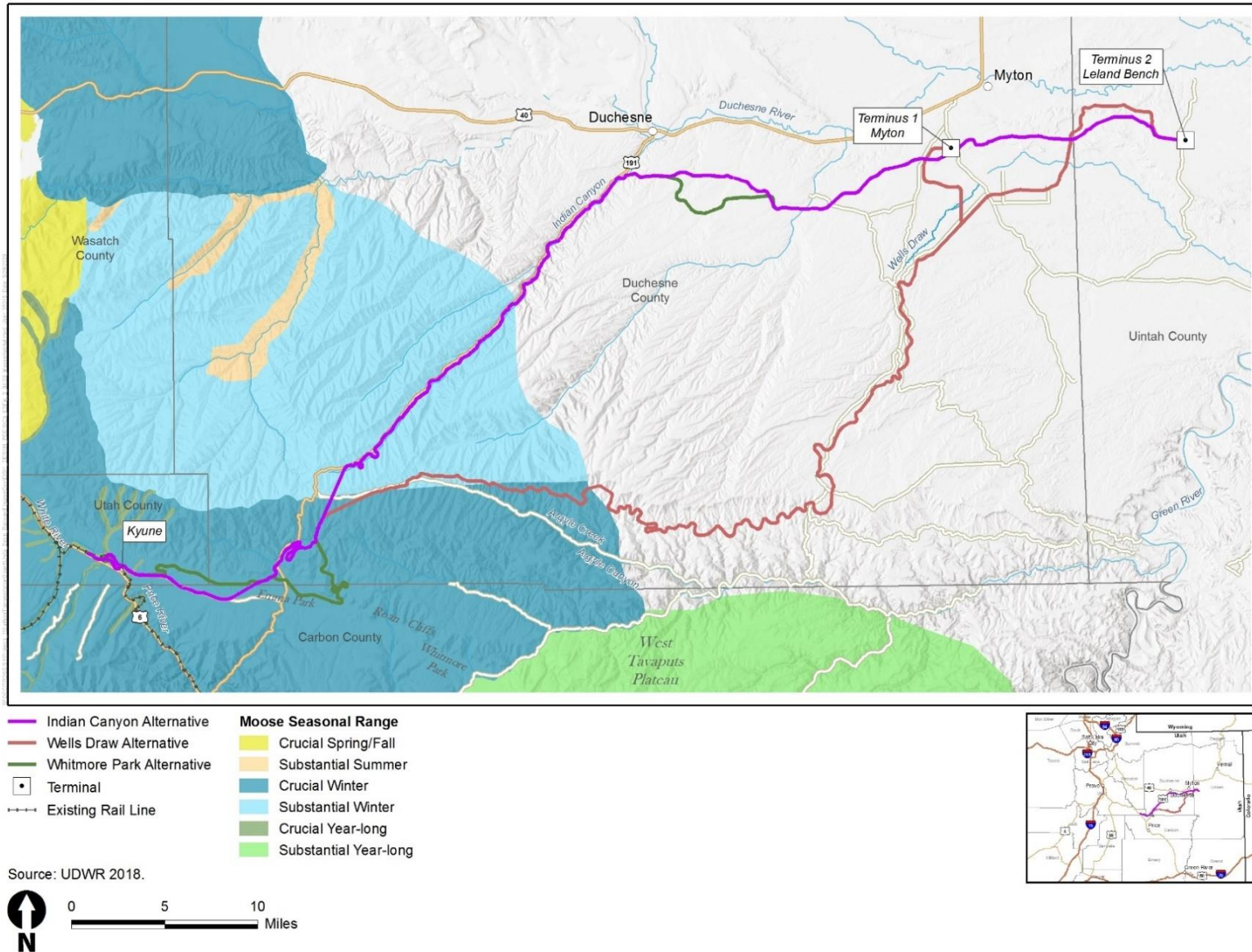


Figure G-8. Mule Deer Seasonal Range and Movement Corridors

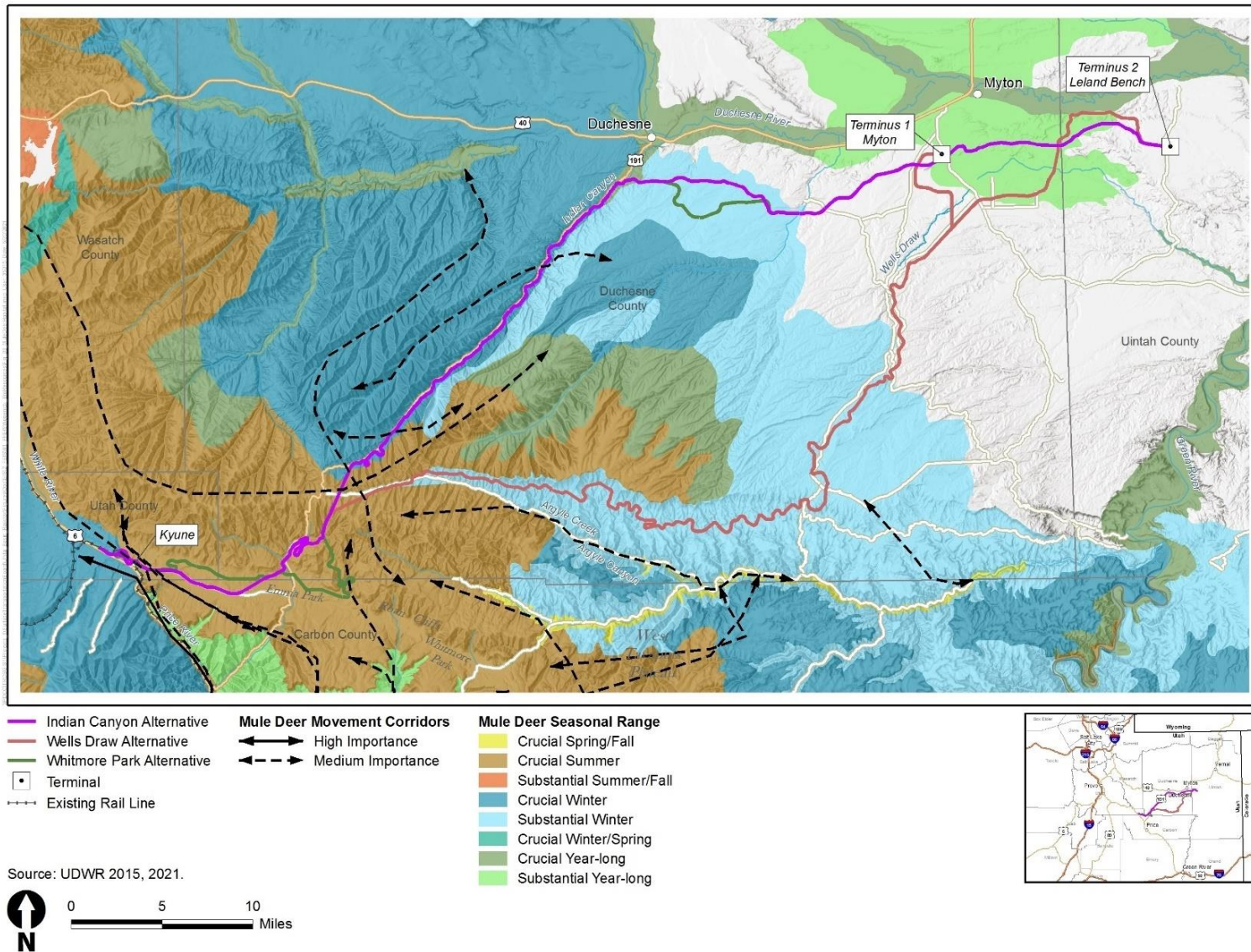
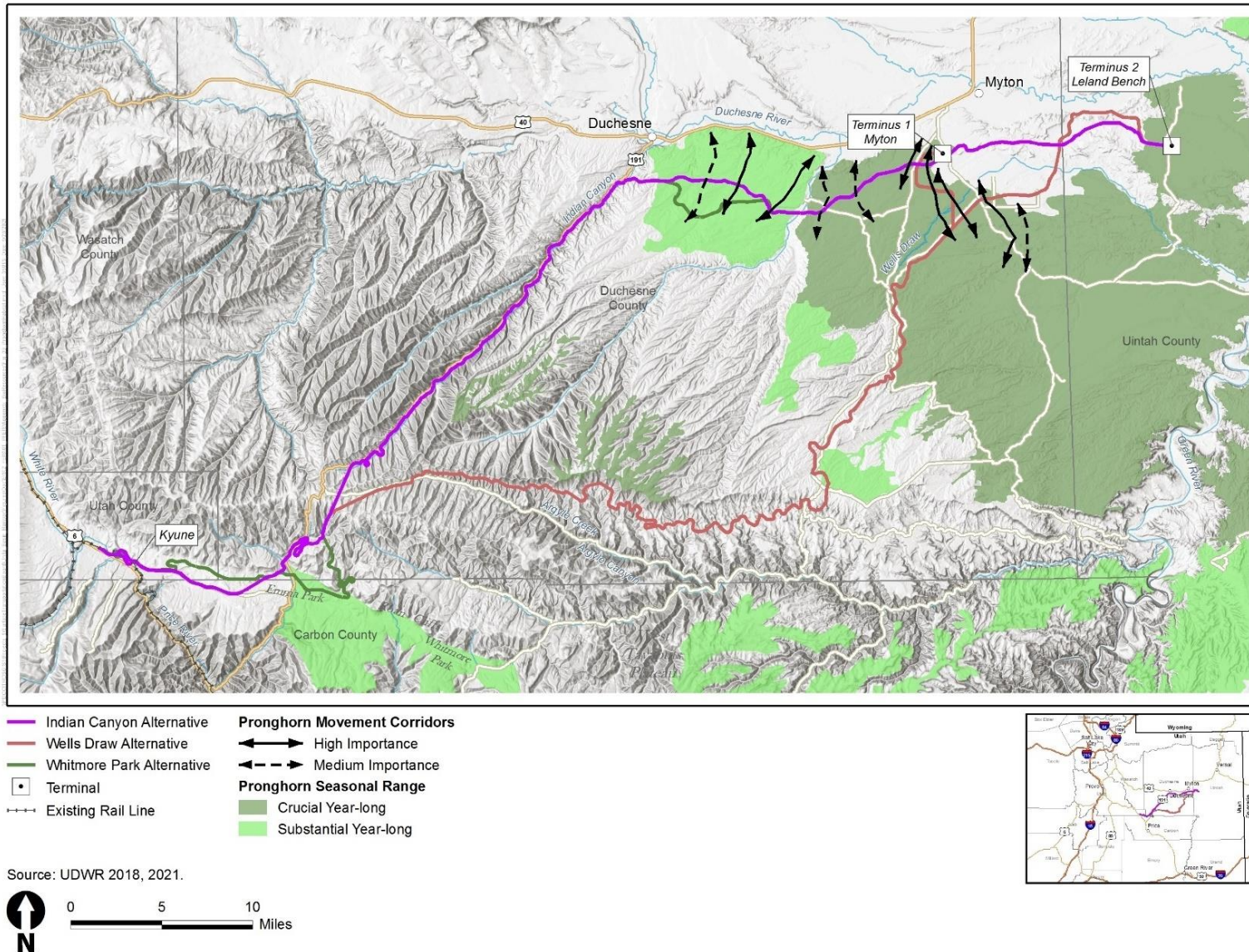


Figure G-9. Pronghorn Seasonal Range and Movement Corridors

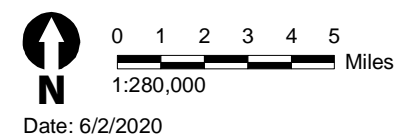
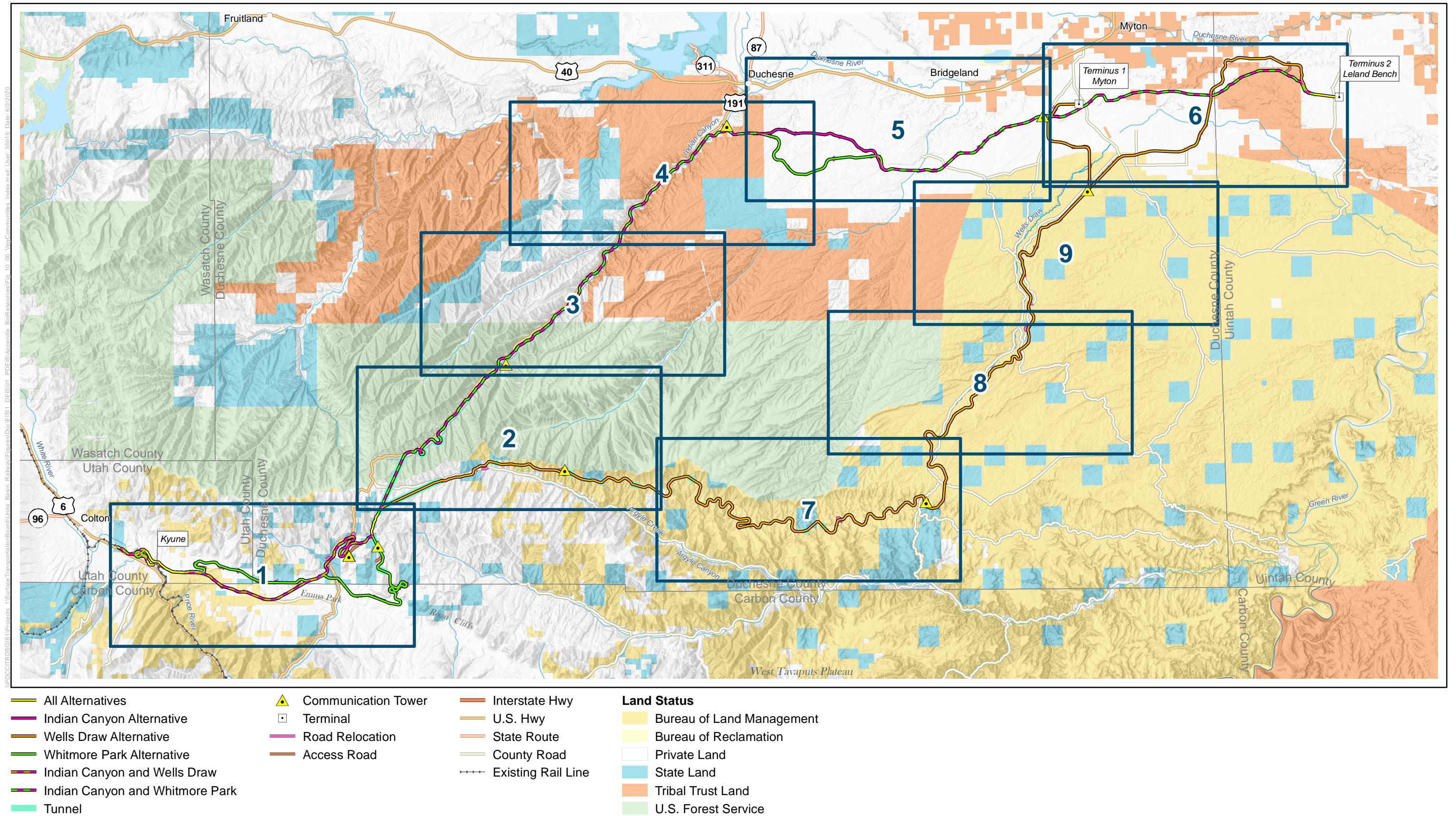


References

- Seven County Infrastructure Coalition (Coalition). 2020a. *Biological Resources Baseline Environment Technical Memorandum: Uinta Basin Railway* (Technical Memorandum).
- [Seven County Infrastructure Coalition \(Coalition\). 2020b. *Draft Mexican Spotted Owl Habitat Evaluation Memorandum*. July 31.](#)
- [Seven County Infrastructure Coalition \(Coalition\). 2020c. *Draft Barneby Ridge-Cress Habitat Evaluation Memorandum*. July 30.](#)
- [U.S. Fish and Wildlife Service \(USFWS\). 2011a. *Lepidium barnebyanum* \(Barneby ridge-cress\). 5-Year Review: Summary and Evaluation. Utah Field Office – Ecological Services. July. Available: \[https://ecos.fws.gov/docs/five_year_review/doc3779.pdf\]\(https://ecos.fws.gov/docs/five_year_review/doc3779.pdf\). Accessed: August 14, 2020.](#)
- [U.S. Fish and Wildlife Service \(USFWS\). 2011b. *Sclerocactus Core 1 and Core 2 conservation area GIS data*.](#)
- [U.S. Fish and Wildlife Service \(USFWS\). 2019. *Pariette Cactus \(Sclerocactus brevispinus\) and Uinta Basin Hookless Cactus \(Sclerocactus wetlandicus\) Suitable habitat GIS data*.](#)
- [U.S. Forest Service. 2020. *Wildfire Hazard Potential for the United States, version 2020 \(270m\)*. 3rd Edition. Fort Collins, CO: Forest Service Research Data Archive. Available: <https://www.firelab.org/project/wildfire-hazard-potential>. Accessed: April 2, 2021.](#)
- [Utah Division of Wildlife Resources \(UDWR\). 2006. *UDWR Mammal Habitat Coverages GIS – Snowshoe Hare Habitat*.](#)
- [Utah Division of Wildlife Resources \(UDWR\). 2013. *Elk Habitat shapefile*. April 8, 2013. Available: <https://dwr.cdc.nr.utah.gov/ucdc/DownloadGIS/disclaim.htm>.](#)
- [Utah Division of Wildlife Resources \(UDWR\). 2015. *Utah Statewide Elk Management Plan*. Available: \[https://wildlife.utah.gov/pdf/bg/elk_plan.pdf\]\(https://wildlife.utah.gov/pdf/bg/elk_plan.pdf\). Accessed: April 9, 2021.](#)
- [Utah Division of Wildlife Resources \(UDWR\). 2018. *Utah Bighorn Sheep Statewide Management Plan*. Available: <https://wildlife.utah.gov/pdf/bg/bighorn-plan.pdf>. Accessed: April 9, 2021.](#)
- [Utah Division of Wildlife Resources \(UDWR\). 2021. *Big Game Movement Corridor GIS data*. Developed by UDWR for the Surface Transportation Board's \(STB\) Office of Environmental Analysis \(OEA\) for the Uinta Basin Railway Project Environmental Impact Statement. May 10.](#)

Figure G-10
Mapbook

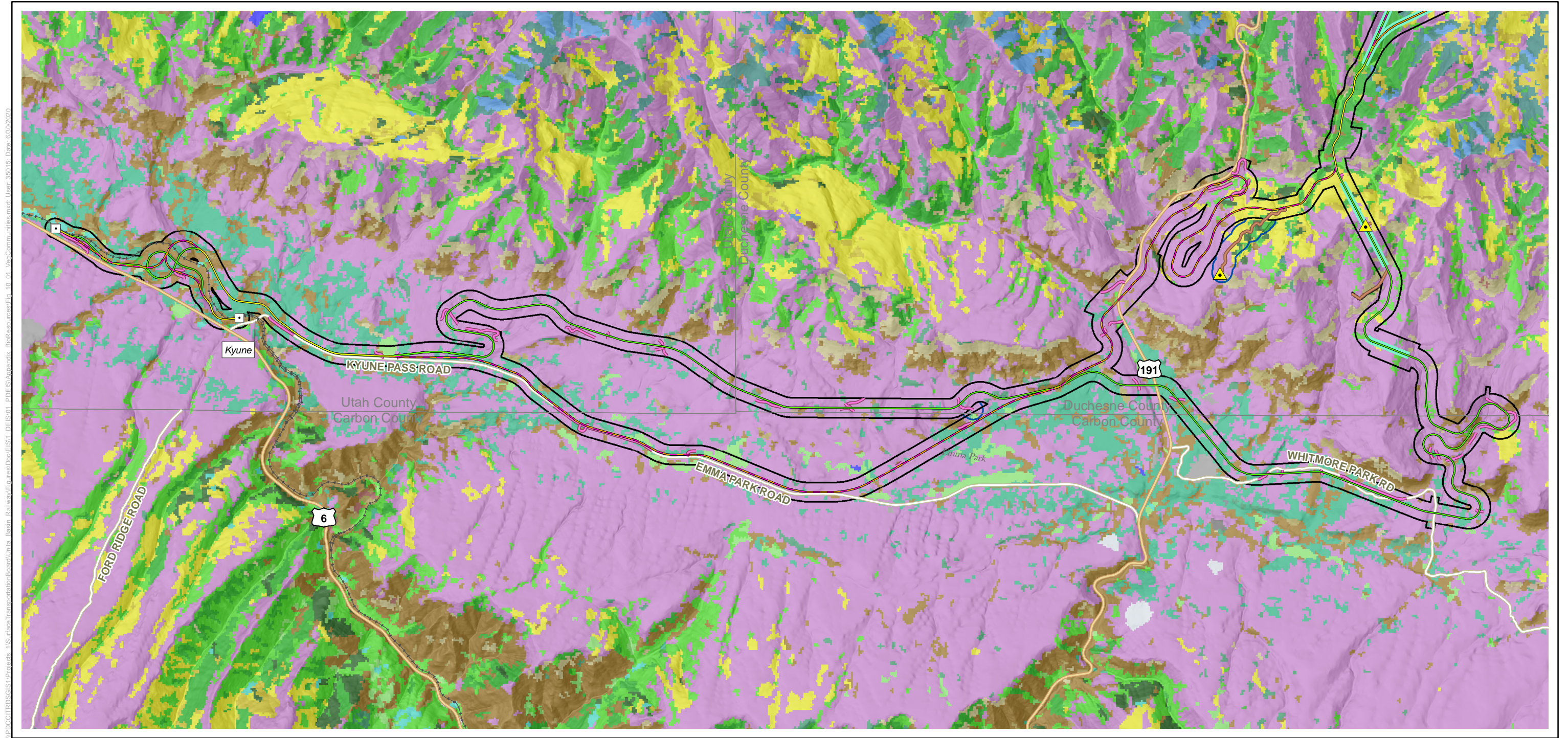
\\POC\ITRDS\GIS\Projects_1\SurfaceTransportation\Board\Units_Basin_Railway\Figures\Doc\EIS1_PDES\01_PDES\Appendix_BioResources\Fig_10_00_VegCommunities_Index.mxd User: 35015 Date: 6/2/2020



Date: 6/2/2020

Figure 10. Vegetation Communities

\\POC\ITRDS\GIS\1\Projects_1\SurfaceTransportation\Board\Units_Basin_Railway\Figures\Doc\EIS\1_DEIS\01_PDEIS\Appendix_BioResources\Fig_10_01_VegCommunities.mxd; User: 350115; Date: 6/30/2020



- | | |
|---------------------------------|--------------------------------|
| All Alternatives | Communication Tower |
| Indian Canyon Alternative | Road Relocation |
| Wells Draw Alternative | Access Road |
| Whitmore Park Alternative | Existing Rail Line |
| Indian Canyon and Wells Draw | Survey Study Area |
| Indian Canyon and Whitmore Park | Supplemental Survey Study Area |
| Terminal | |
| Tunnel | |

Source: USGS 2004.



Date: 6/30/2020

Vegetation Communities

- | | |
|---|---|
| Colorado Plateau Mixed Bedrock Canyon and Tableland | Inter-Mountain West Aspen-Mixed Conifer Forest and Woodland Complex |
| Colorado Plateau Mixed Low Sagebrush Shrubland | Invasive Annual Grassland |
| Colorado Plateau Pinyon-Juniper Shrubland | Open Water |
| Colorado Plateau Pinyon-Juniper Woodland | Rocky Mountain Alpine-Montane Wet Meadow |
| Developed, Medium - High Intensity | Rocky Mountain Aspen Forest and Woodland |
| Developed, Open Space - Low Intensity | Rocky Mountain Cliff and Canyon |
| Disturbed, Oil well | Rocky Mountain Gambel Oak-Mixed Montane Shrubland |
| Inter-Mountain Basins Big Sagebrush Shrubland | Rocky Mountain Lower Montane Riparian Woodland and Shrubland |
| Inter-Mountain Basins Greasewood Flat | Rocky Mountain Montane Dry-Mesic Mixed Conifer Forest and Woodland |
| Inter-Mountain Basins Mixed Salt Desert Scrub | Rocky Mountain Montane Mesic Mixed Conifer Forest and Woodland |
| Inter-Mountain Basins Montane Sagebrush Steppe | Rocky Mountain Subalpine Dry-Mesic Spruce-Fir Forest and Woodland |
| Inter-Mountain Basins Semi-Desert Grassland | Rocky Mountain Subalpine Mesic Spruce-Fir Forest and Woodland |
| Inter-Mountain Basins Semi-Desert Shrub Steppe | Southern Rocky Mountain Montane-Subalpine Grassland |

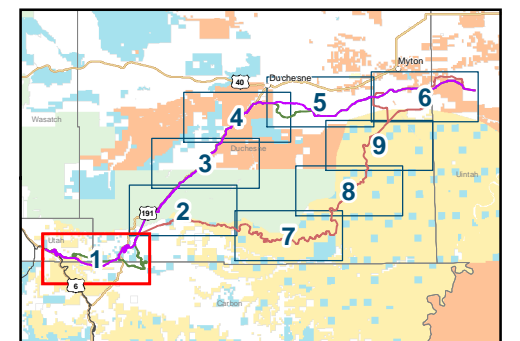
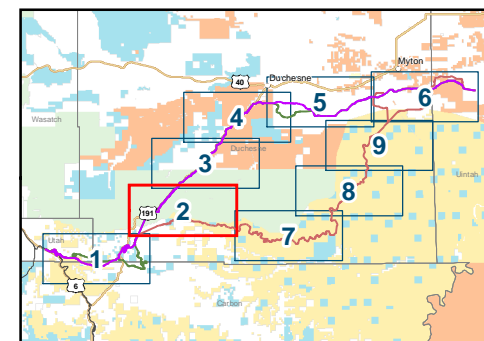


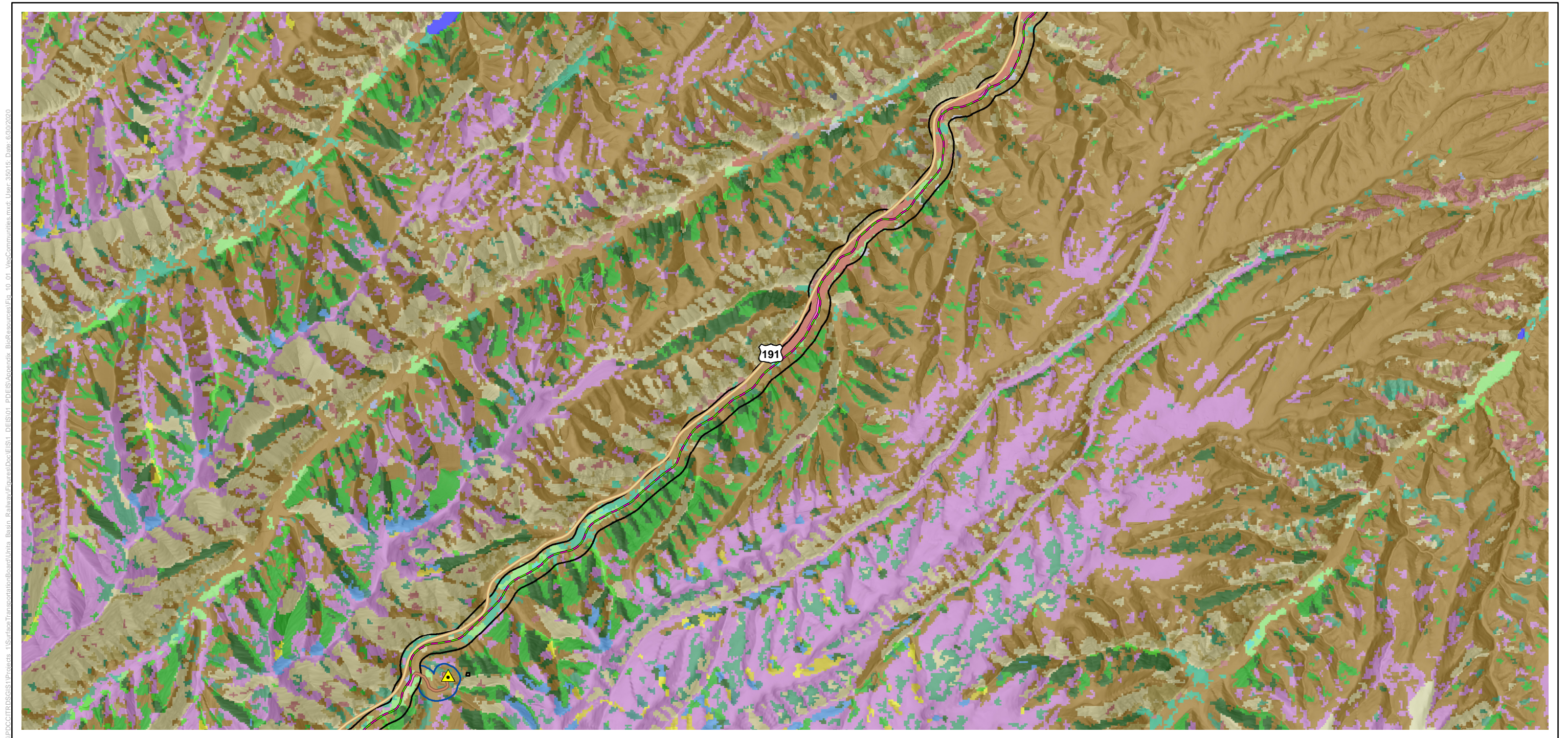
Figure 10. Vegetation Communities
Sheet 1 of 9



Date: 6/30/2020

Figure 10. Vegetation Communities
Sheet 2 of 9

\\POC\ITRDS\GIS\Projects_1\SurfaceTransportation\Board\Units_Basin_Railway\Figures\Doc\EIS\1_PDEIS\Appendix_BioResources\Fig_10_01_VegCommunities.mxd; User: 350115; Date: 6/30/2020



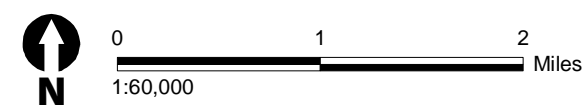
- | | |
|---------------------------------|--------------------------------|
| All Alternatives | Communication Tower |
| Indian Canyon Alternative | Road Relocation |
| Wells Draw Alternative | Access Road |
| Whitmore Park Alternative | Existing Rail Line |
| Indian Canyon and Wells Draw | Survey Study Area |
| Indian Canyon and Whitmore Park | Supplemental Survey Study Area |
| Terminal | |
| Tunnel | |

Vegetation Communities

- | |
|---|
| Agriculture |
| Colorado Plateau Mixed Bedrock Canyon and Tableland |
| Colorado Plateau Mixed Low Sagebrush Shrubland |
| Colorado Plateau Pinyon-Juniper Shrubland |
| Colorado Plateau Pinyon-Juniper Woodland |
| Inter-Mountain Basins Big Sagebrush Shrubland |
| Inter-Mountain Basins Greasewood Flat |
| Inter-Mountain Basins Mixed Salt Desert Scrub |
| Inter-Mountain Basins Montane Sagebrush Steppe |
| Inter-Mountain Basins Semi-Desert Grassland |
| Inter-Mountain Basins Semi-Desert Shrub Steppe |
| Inter-Mountain West Aspen-Mixed Conifer Forest and Woodland Complex |
| Invasive Annual Grassland |

- | |
|--|
| Open Water |
| Recently Chained Pinyon-Juniper Areas |
| Rocky Mountain Alpine-Montane Wet Meadow |
| Rocky Mountain Aspen Forest and Woodland |
| Rocky Mountain Cliff and Canyon |
| Rocky Mountain Gambel Oak-Mixed Montane Shrubland |
| Rocky Mountain Lower Montane Riparian Woodland and Shrubland |
| Rocky Mountain Montane Dry-Mesic Mixed Conifer Forest and Woodland |
| Rocky Mountain Montane Mesic Mixed Conifer Forest and Woodland |
| Rocky Mountain Subalpine Dry-Mesic Spruce-Fir Forest and Woodland |
| Rocky Mountain Subalpine Mesic Spruce-Fir Forest and Woodland |
| Southern Rocky Mountain Montane-Subalpine Grassland |

Source: USGS 2004.



Date: 6/30/2020

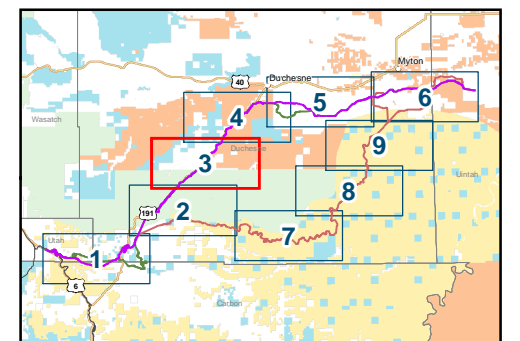
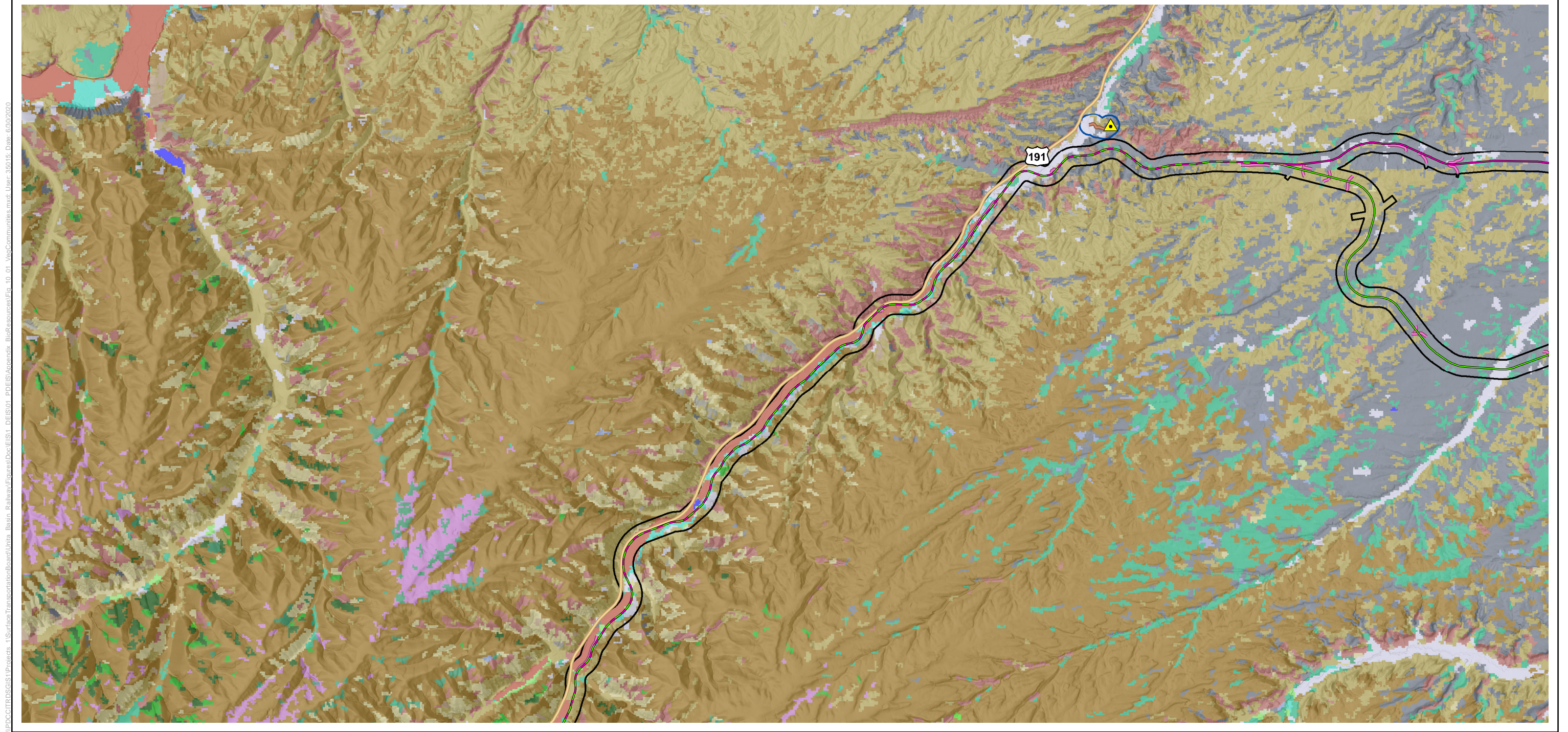


Figure 10. Vegetation Communities
Sheet 3 of 9

\\POC\ITRDS\GIS\Projects_1\SurfaceTransportation\Board\Unita_Basin_Railway\Figures\Doc\EIS\1_PDEIS\Appendix_BioResources\Fig_10_01_VegCommunities.mxd; User: 350115; Date: 6/30/2020



- | | |
|---------------------------------|--------------------------------|
| All Alternatives | Communication Tower |
| Indian Canyon Alternative | Road Relocation |
| Wells Draw Alternative | Access Road |
| Whitmore Park Alternative | Existing Rail Line |
| Indian Canyon and Wells Draw | Survey Study Area |
| Indian Canyon and Whitmore Park | Supplemental Survey Study Area |
| Terminal | |
| Tunnel | |

Vegetation Communities

- | | |
|---|--|
| Agriculture | Inter-Mountain Basins Semi-Desert Shrub Steppe |
| Colorado Plateau Mixed Bedrock Canyon and Tableland | Invasive Annual Grassland |
| Colorado Plateau Mixed Low Sagebrush Shrubland | Invasive Southwest Riparian Woodland and Shrubland |
| Colorado Plateau Pinyon-Juniper Shrubland | Open Water |
| Colorado Plateau Pinyon-Juniper Woodland | Rocky Mountain Alpine-Montane Wet Meadow |
| Developed, Medium - High Intensity | Rocky Mountain Cliff and Canyon |
| Inter-Mountain Basins Big Sagebrush Shrubland | Rocky Mountain Gambel Oak-Mixed Montane Shrubland |
| Inter-Mountain Basins Greasewood Flat | Rocky Mountain Lower Montane Riparian Woodland and Shrubland |
| Inter-Mountain Basins Mat Saltbush Shrubland | Rocky Mountain Montane Dry-Mesic Mixed Conifer Forest and Woodland |
| Inter-Mountain Basins Mixed Salt Desert Scrub | Rocky Mountain Montane Mesic Mixed Conifer Forest and Woodland |
| Inter-Mountain Basins Montane Sagebrush Steppe | Southern Rocky Mountain Montane-Subalpine Grassland |
| Inter-Mountain Basins Semi-Desert Grassland | |

Source: USGS 2004.



Date: 6/30/2020

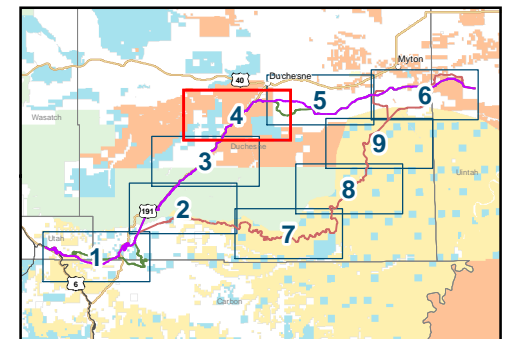
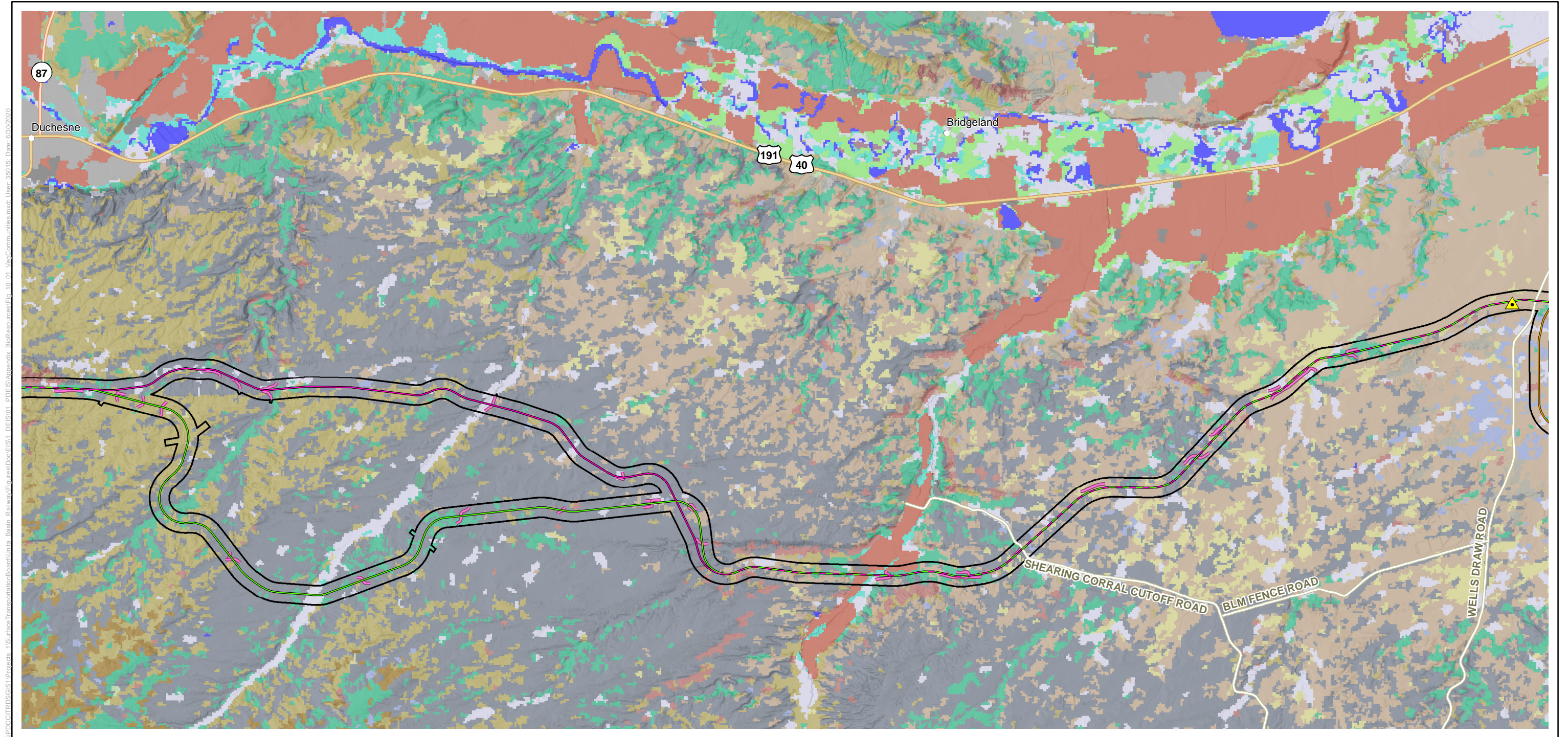


Figure 10. Vegetation Communities
Sheet 4 of 9

\\POC\ITRDS\GIS\Projects_1\SurfaceTransportation\Board\Initial_Basin_Railway\Figures\Doc\EIS\1_DEIS\01_PDEIS\Appendix_BioResources\Fig_10_01_VegCommunities.mxd; User: 35015; Date: 6/30/2020



- | | |
|---------------------------------|--------------------------------|
| All Alternatives | Communication Tower |
| Indian Canyon Alternative | Road Relocation |
| Wells Draw Alternative | Access Road |
| Whitmore Park Alternative | Existing Rail Line |
| Indian Canyon and Wells Draw | Survey Study Area |
| Indian Canyon and Whitmore Park | Supplemental Survey Study Area |
| Terminal | |
| Tunnel | |

Vegetation Communities

- | | |
|---|--|
| Agriculture | Inter-Mountain Basins Semi-Desert Grassland |
| Colorado Plateau Mixed Bedrock Canyon and Tableland | Inter-Mountain Basins Semi-Desert Shrub Steppe |
| Colorado Plateau Mixed Low Sagebrush Shrubland | Inter-Mountain Basins Shale Badland |
| Colorado Plateau Pinyon-Juniper Shrubland | Invasive Annual Grassland |
| Colorado Plateau Pinyon-Juniper Woodland | Invasive Southwest Riparian Woodland and Shrubland |
| Developed, Medium - High Intensity | Open Water |
| Developed, Open Space - Low Intensity | Rocky Mountain Alpine-Montane Wet Meadow |
| Inter-Mountain Basins Big Sagebrush Shrubland | Rocky Mountain Cliff and Canyon |
| Inter-Mountain Basins Greasewood Flat | Rocky Mountain Lower Montane Riparian Woodland and Shrubland |
| Inter-Mountain Basins Mat Saltbush Shrubland | Southern Rocky Mountain Montane-Subalpine Grassland |
| Inter-Mountain Basins Mixed Salt Desert Scrub | |

Source: USGS 2004.



Date: 6/30/2020

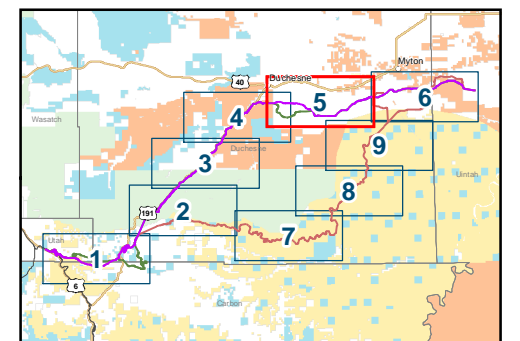
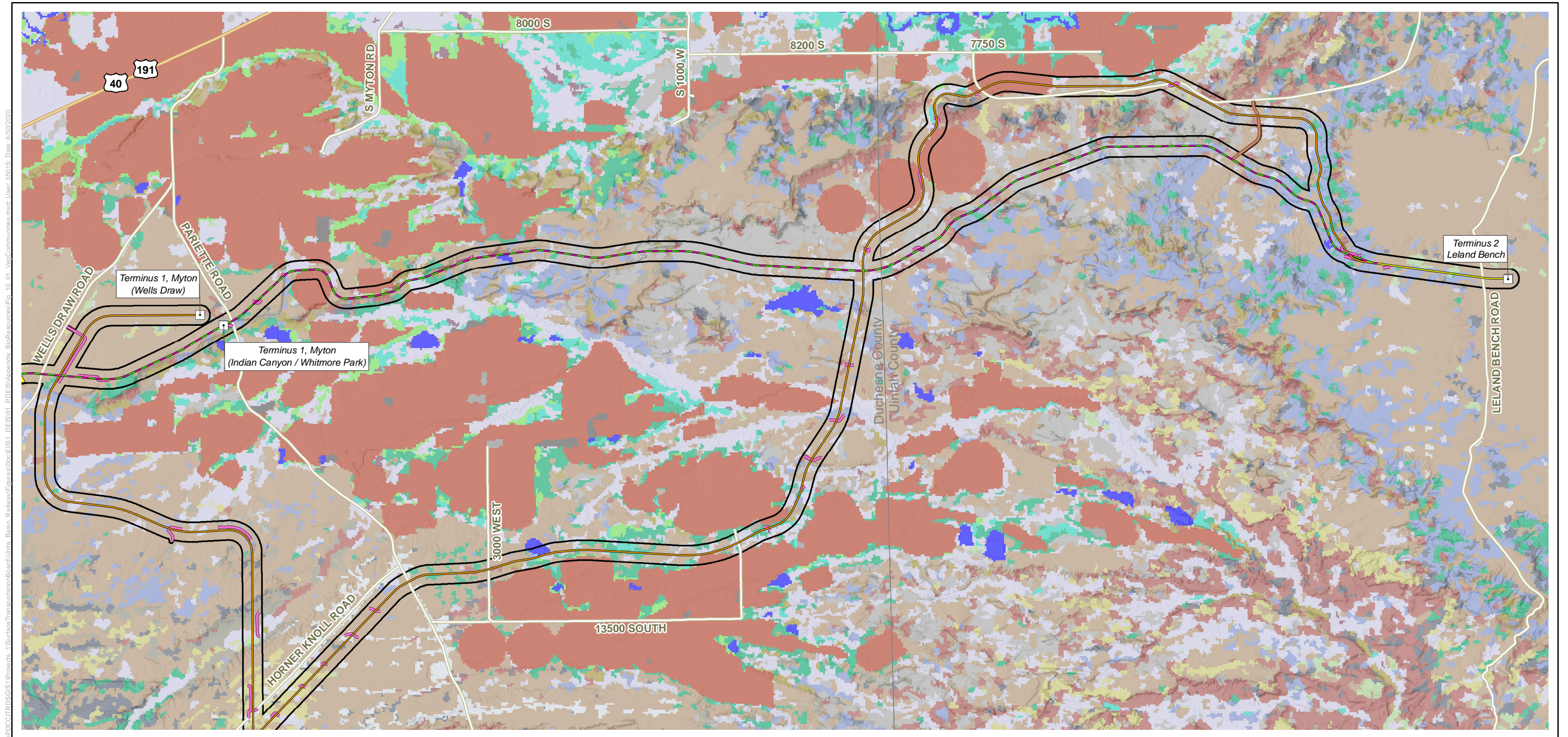


Figure 10. Vegetation Communities
Sheet 5 of 9

\\PDC\IT\GIS\1\Projects_1\SurfaceTransportation\Board\Units_Basin_Railway\Figures\Doc\GIS1_DEIS\01_PDEIS\Appendix_BioResources\Fig_10_01_VecCommunities.mxd; User: 350115; Date: 6/30/2020

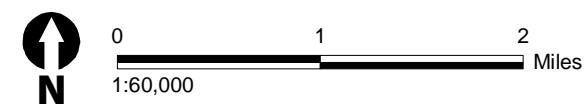


- | | |
|---------------------------------|--------------------------------|
| All Alternatives | Communication Tower |
| Indian Canyon Alternative | Road Relocation |
| Wells Draw Alternative | Access Road |
| Whitmore Park Alternative | Existing Rail Line |
| Indian Canyon and Wells Draw | Survey Study Area |
| Indian Canyon and Whitmore Park | Supplemental Survey Study Area |
| Terminal | |
| Tunnel | |

Vegetation Communities

- | | |
|---|--|
| Agriculture | Inter-Mountain Basins Mixed Salt Desert Scrub |
| Colorado Plateau Mixed Bedrock Canyon and Tableland | Inter-Mountain Basins Semi-Desert Grassland |
| Colorado Plateau Mixed Low Sagebrush Shrubland | Inter-Mountain Basins Semi-Desert Shrub Steppe |
| Colorado Plateau Pinyon-Juniper Shrubland | Inter-Mountain Basins Shale Badland |
| Colorado Plateau Pinyon-Juniper Woodland | Invasive Annual Grassland |
| Developed, Medium - High Intensity | Invasive Southwest Riparian Woodland and Shrubland |
| Developed, Open Space - Low Intensity | Open Water |
| Disturbed, Oil well | Rocky Mountain Alpine-Montane Wet Meadow |
| Inter-Mountain Basins Big Sagebrush Shrubland | Rocky Mountain Cliff and Canyon |
| Inter-Mountain Basins Greasewood Flat | Rocky Mountain Lower Montane Riparian Woodland and Shrubland |
| Inter-Mountain Basins Mat Saltbush Shrubland | |

Source: USGS 2004.



Date: 6/30/2020

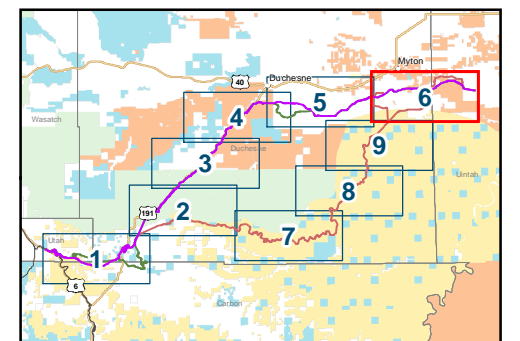
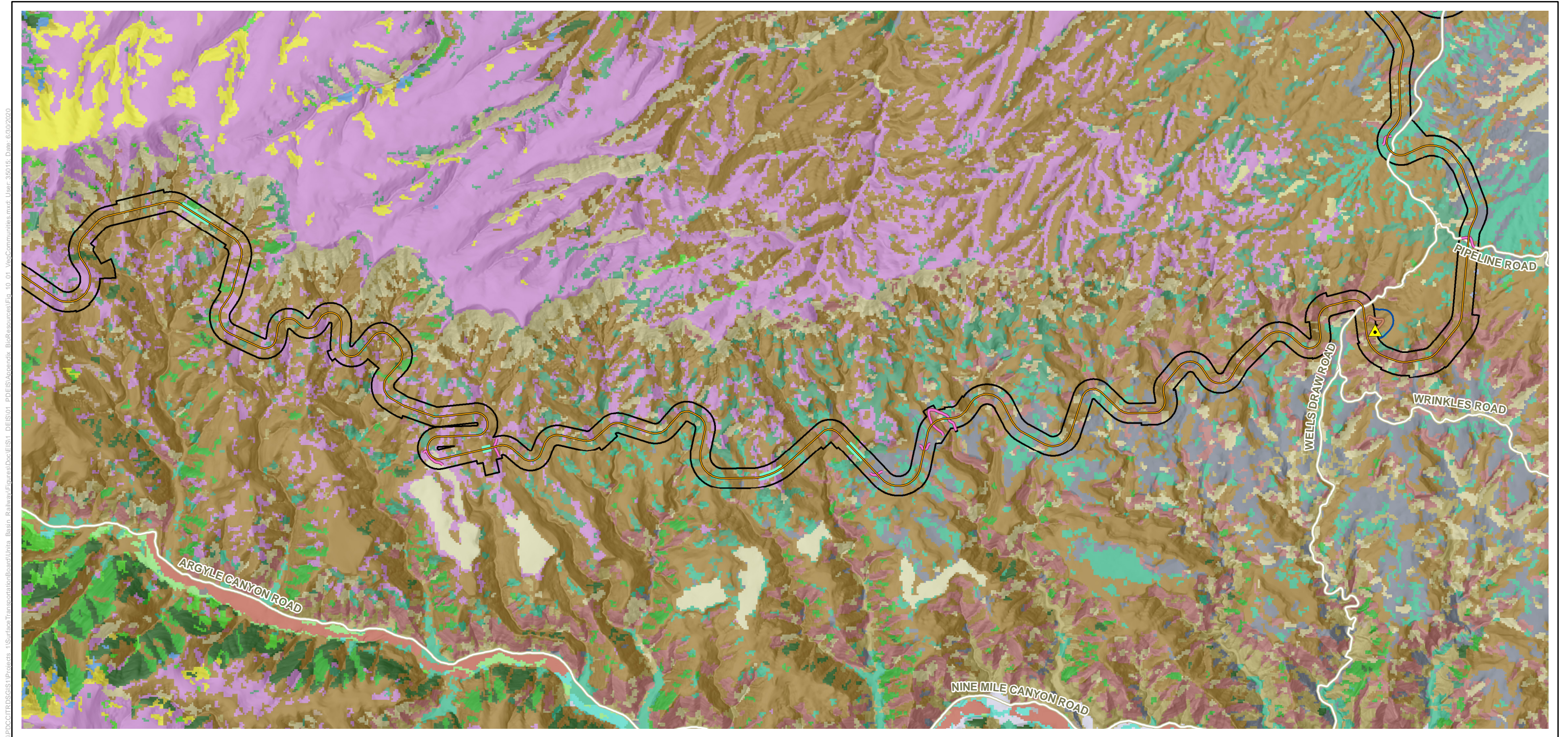


Figure 10. Vegetation Communities
Sheet 6 of 9

\\POC\ITRDS\GIS\Projects_1\SurfaceTransportation\Board\Units_Basin_Railway\Figures\Doc\EIS1_DEIS\01_PDEIS\Appendix_BioResources\Fig_10_01_VegCommunities.mxd; User: 350115; Date: 6/30/2020



- | | |
|---------------------------------|--------------------------------|
| All Alternatives | Communication Tower |
| Indian Canyon Alternative | Road Relocation |
| Wells Draw Alternative | Access Road |
| Whitmore Park Alternative | Existing Rail Line |
| Indian Canyon and Wells Draw | Survey Study Area |
| Indian Canyon and Whitmore Park | Supplemental Survey Study Area |
| Terminal | |
| Tunnel | |

Source: USGS 2004.



Date: 6/30/2020

Vegetation Communities

- | | |
|---|---|
| Agriculture | Inter-Mountain West Aspen-Mixed Conifer Forest and Woodland Complex |
| Colorado Plateau Mixed Bedrock Canyon and Tableland | Invasive Annual Grassland |
| Colorado Plateau Mixed Low Sagebrush Shrubland | Recently Chained Pinyon-Juniper Areas |
| Colorado Plateau Pinyon-Juniper Shrubland | Rocky Mountain Alpine-Montane Wet Meadow |
| Colorado Plateau Pinyon-Juniper Woodland | Rocky Mountain Aspen Forest and Woodland |
| Developed, Medium - High Intensity | Rocky Mountain Cliff and Canyon |
| Developed, Open Space - Low Intensity | Rocky Mountain Gambel Oak-Mixed Montane Shrubland |
| Inter-Mountain Basins Big Sagebrush Shrubland | Rocky Mountain Lower Montane Riparian Woodland and Shrubland |
| Inter-Mountain Basins Greasewood Flat | Rocky Mountain Montane Dry-Mesic Mixed Conifer Forest and Woodland |
| Inter-Mountain Basins Mat Saltbush Shrubland | Rocky Mountain Montane Mesic Mixed Conifer Forest and Woodland |
| Inter-Mountain Basins Mixed Salt Desert Scrub | Rocky Mountain Subalpine Dry-Mesic Spruce-Fir Forest and Woodland |
| Inter-Mountain Basins Montane Sagebrush Steppe | Rocky Mountain Subalpine Mesic Spruce-Fir Forest and Woodland |
| Inter-Mountain Basins Semi-Desert Grassland | Southern Rocky Mountain Montane-Subalpine Grassland |
| Inter-Mountain Basins Semi-Desert Shrub Steppe | |

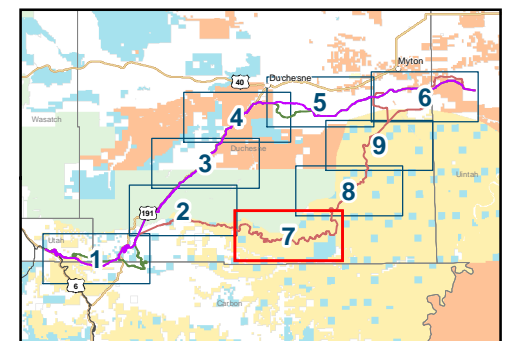
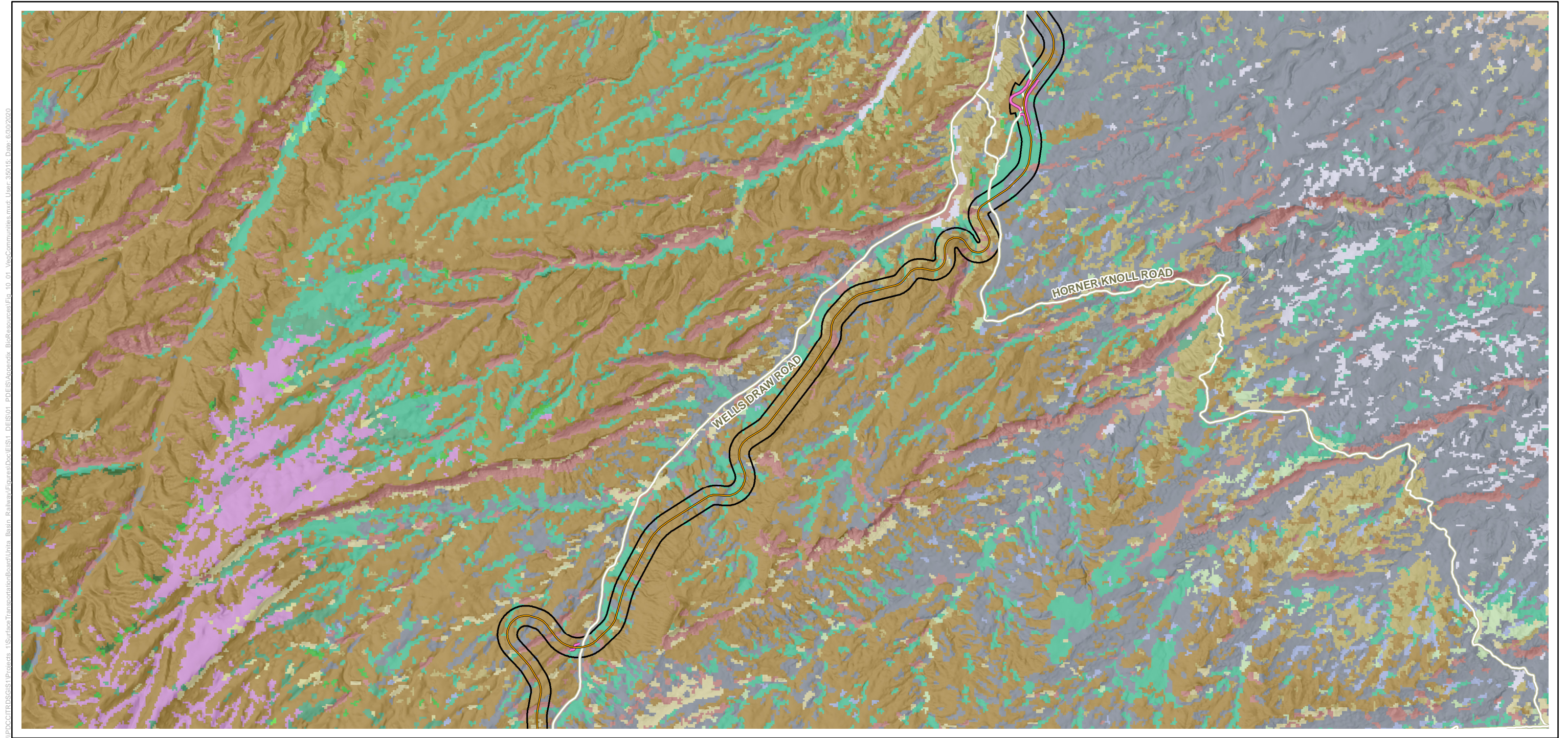


Figure 10. Vegetation Communities
Sheet 7 of 9

\\PDC\ITROSGIS\Projects_1\SurfaceTransportation\Board\Units_Basin_Railway\Figures\Doc\EIS\1_PDEIS\Appendix_BioResources\Fig_10_01_VegCommunities.mxd; User: 350115; Date: 6/30/2020

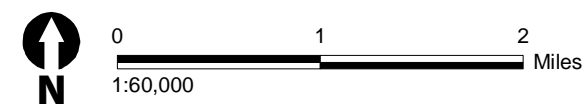


- All Alternatives
- Indian Canyon Alternative
- Wells Draw Alternative
- Whitmore Park Alternative
- Indian Canyon and Wells Draw
- Indian Canyon and Whitmore Park
- Terminal
- Tunnel
- Communication Tower
- Road Relocation
- Access Road
- Existing Rail Line
- Survey Study Area
- Supplemental Survey Study Area

Vegetation Communities

- Colorado Plateau Mixed Bedrock Canyon and Tableland
- Colorado Plateau Mixed Low Sagebrush Shrubland
- Colorado Plateau Pinyon-Juniper Shrubland
- Colorado Plateau Pinyon-Juniper Woodland
- Inter-Mountain Basins Big Sagebrush Shrubland
- Inter-Mountain Basins Greasewood Flat
- Inter-Mountain Basins Mat Saltbush Shrubland
- Inter-Mountain Basins Mixed Salt Desert Scrub
- Inter-Mountain Basins Montane Sagebrush Steppe
- Inter-Mountain Basins Semi-Desert Grassland
- Inter-Mountain Basins Semi-Desert Shrub Steppe
- Invasive Annual Grassland
- Rocky Mountain Alpine-Montane Wet Meadow
- Rocky Mountain Cliff and Canyon
- Rocky Mountain Gambel Oak-Mixed Montane Shrubland
- Rocky Mountain Lower Montane Riparian Woodland and Shrubland
- Rocky Mountain Montane Dry-Mesic Mixed Conifer Forest and Woodland
- Rocky Mountain Montane Mesic Mixed Conifer Forest and Woodland
- Southern Rocky Mountain Montane-Subalpine Grassland

Source: USGS 2004.



Date: 6/30/2020

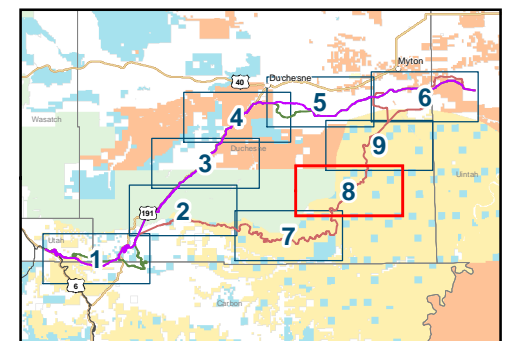
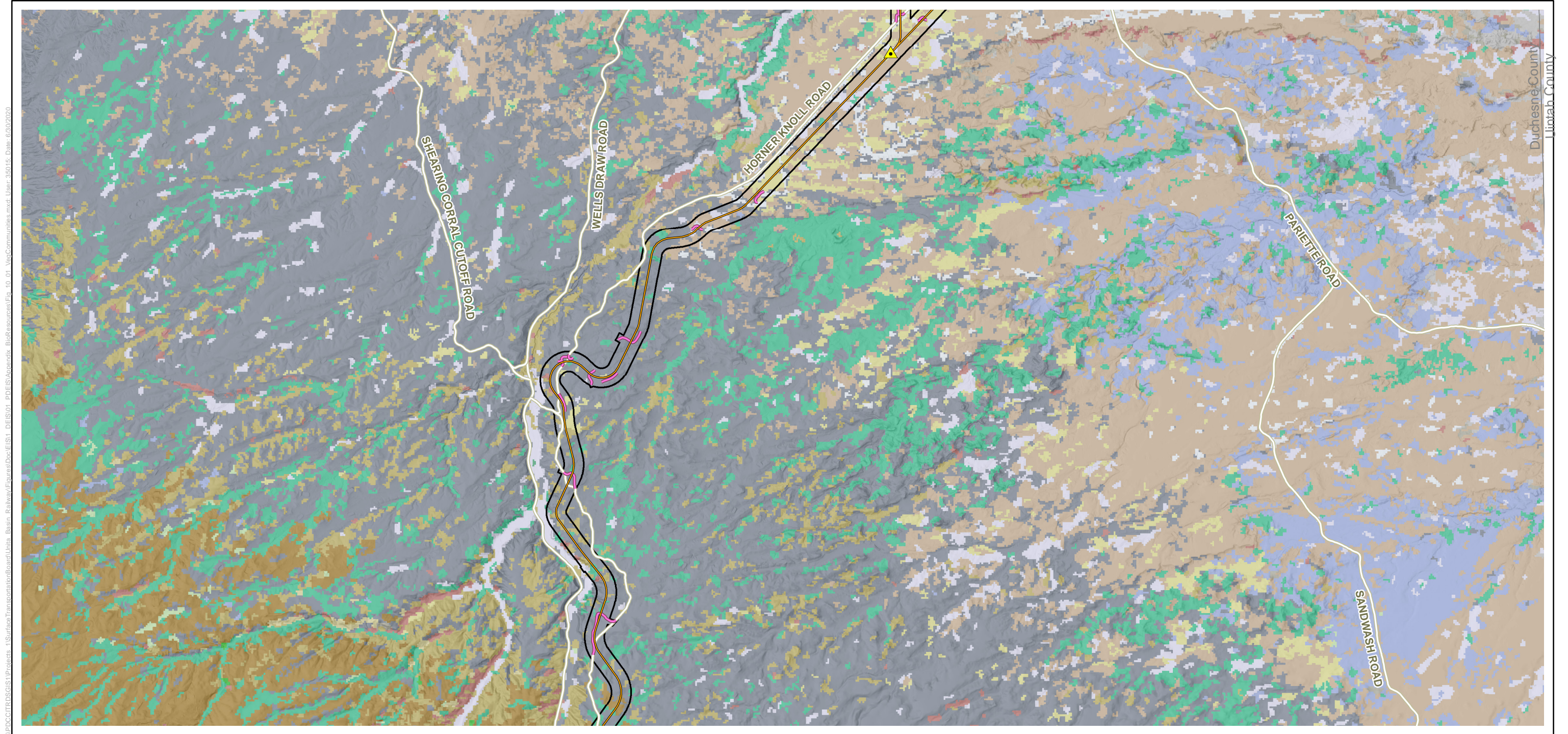


Figure 10. Vegetation Communities
Sheet 8 of 9

\\POC\ITRDS\GIS\1\Projects_1\SurfaceTransportation\Board\Utah_Basin_Railway\Figures\Doc\EIS\1_DEIS\01_PDEIS\Appendix_BioResources\Fig_10_01_VegCommunities.mxd; User: 350115; Date: 6/30/2020

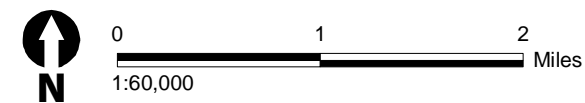


- | | |
|---------------------------------|--------------------------------|
| All Alternatives | Communication Tower |
| Indian Canyon Alternative | Road Relocation |
| Wells Draw Alternative | Access Road |
| Whitmore Park Alternative | Existing Rail Line |
| Indian Canyon and Wells Draw | Survey Study Area |
| Indian Canyon and Whitmore Park | Supplemental Survey Study Area |
| Terminal | |
| Tunnel | |

Vegetation Communities

- | | |
|---|--|
| Agriculture | Inter-Mountain Basins Mixed Salt Desert Scrub |
| Colorado Plateau Mixed Bedrock Canyon and Tableland | Inter-Mountain Basins Semi-Desert Grassland |
| Colorado Plateau Mixed Low Sagebrush Shrubland | Inter-Mountain Basins Semi-Desert Shrub Steppe |
| Colorado Plateau Pinyon-Juniper Shrubland | Inter-Mountain Basins Shale Badland |
| Colorado Plateau Pinyon-Juniper Woodland | Invasive Annual Grassland |
| Disturbed, Oil well | Rocky Mountain Cliff and Canyon |
| Inter-Mountain Basins Big Sagebrush Shrubland | Rocky Mountain Montane Dry-Mesic Mixed Conifer Forest and Woodland |
| Inter-Mountain Basins Greasewood Flat | Southern Rocky Mountain Montane-Subalpine Grassland |
| Inter-Mountain Basins Mat Saltbush Shrubland | |

Source: USGS 2004.



Date: 6/30/2020

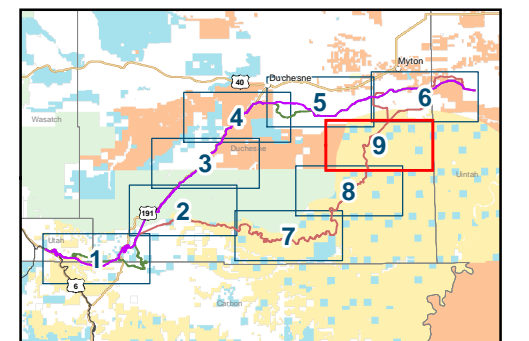


Figure 10. Vegetation Communities
Sheet 9 of 9